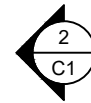
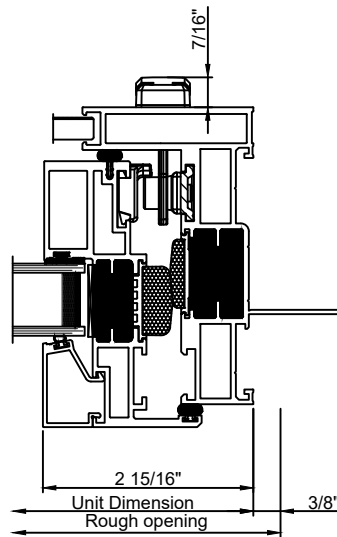
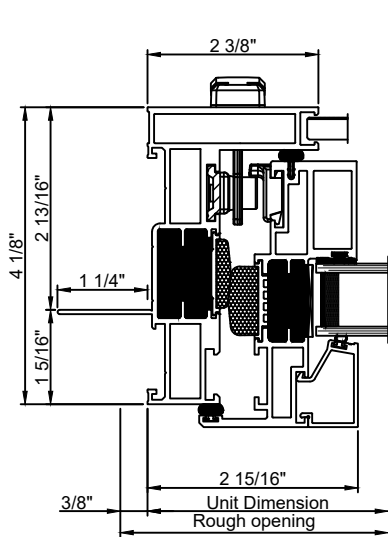


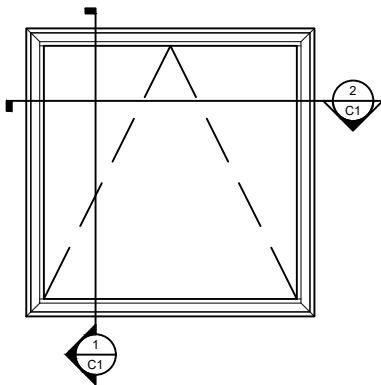
CityLine (C600) Square Roto Awning Window

Cross section details

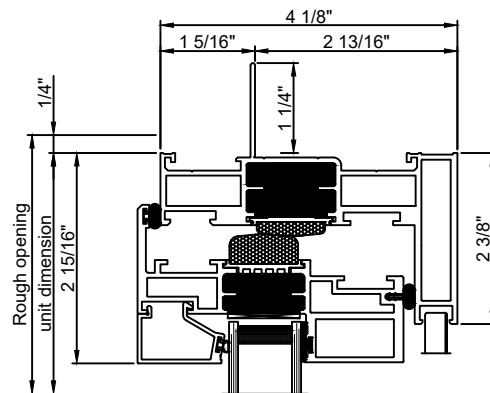


Window cut sections 3/8" = 0' 1"

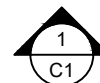
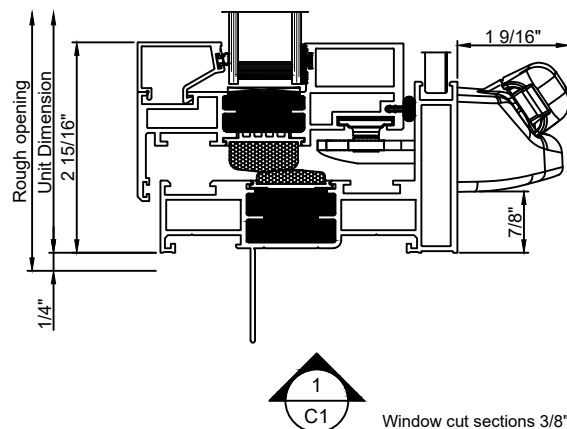
Exterior



Window Elevation 3/8" = 1' 0"



Exterior

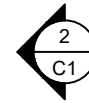
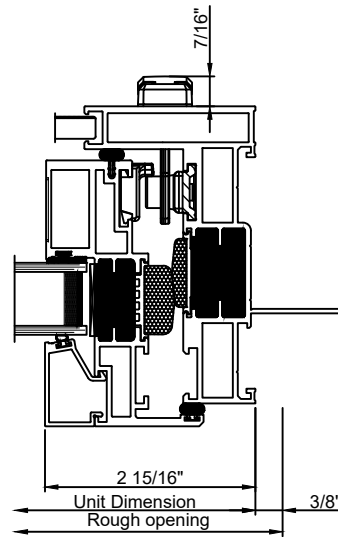
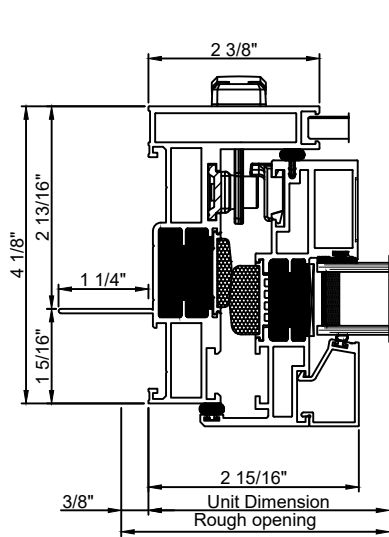


Window cut sections 3/8" = 0' 1"

Note: All dimensions are approximate. Quaker reserves the right to change specifications without notice.

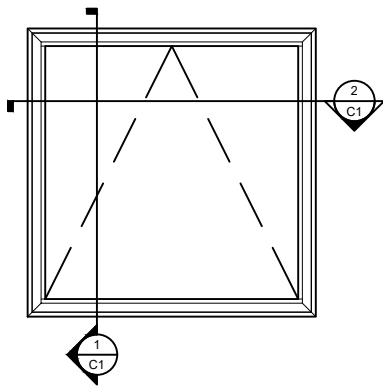
CityLine (C600) Square Push Out Awning Window

Cross section details

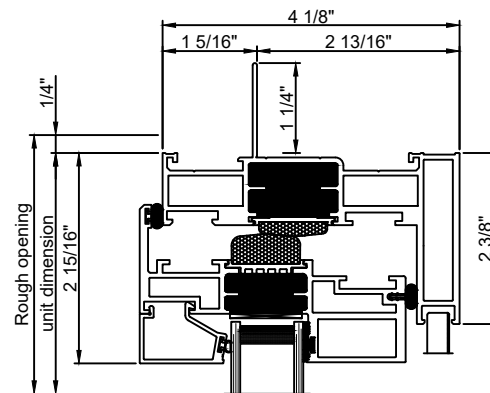


Window cut sections $3 \frac{3}{8}" = 0' 1"$

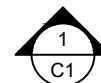
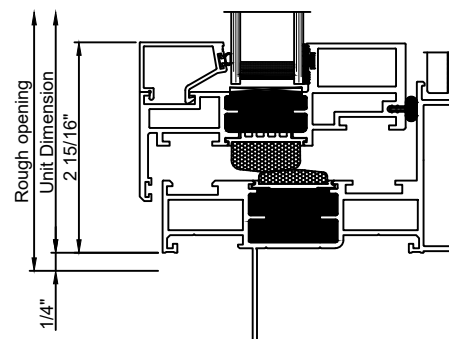
Exterior



Window Elevation $3 \frac{3}{8}" = 1' 0"$



Exterior

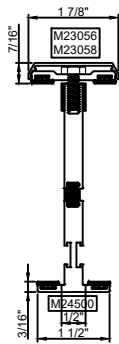


Window cut sections $3 \frac{3}{8}" = 0' 1"$

Note: All dimensions are approximate. Quaker reserves the right to change specifications without notice.

CityLine (C600) Square Awning Mulling Options

1 Cross section details

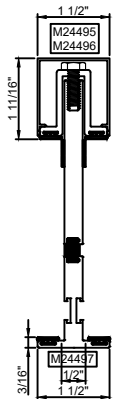
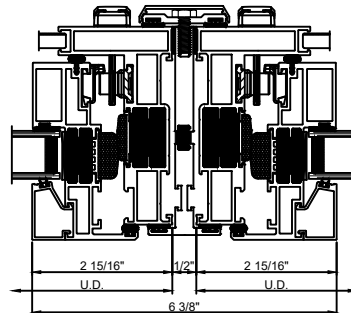


T-MULL

M24500 - T-MULL
M23056 - BASE
M23058 - CAP

BPN-9159 - W.S. (QTY. 4)
MH1/4 20X3/4 - BOLTS (18" APROX. O.C.)
5229-PC - ANCHOR (QTY. 2)
MPS-8X1 1/2 - FASTENERS (QTY. 2)

CAN ONLY BE USED WITH C600

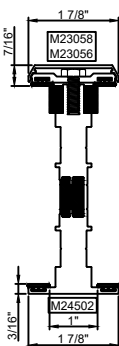
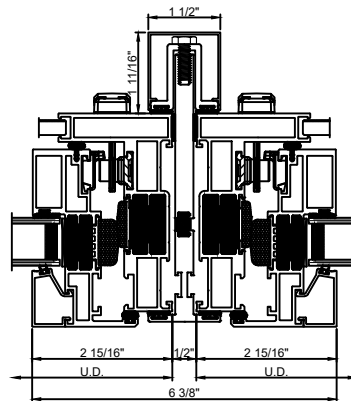


T-MULL

M24497 - T-MULL
M24495 - BASE
M24496 - CAP

BPN-9159 - W.S. (QTY. 4)
MH1/4 20X3/4 - BOLTS (18" APROX. O.C.)
ANCHOR (QTY. 2)
MPS-8X1 1/2 - FASTENERS (QTY. 2)

CAN ONLY BE USED WITH C600

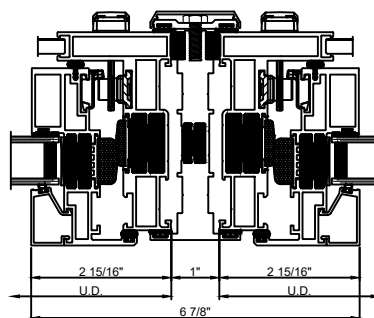


T-MULL

M24502 - T-MULL
M23056 - BASE
M23058 - CAP

BPN-9159 - W.S. (QTY. 4)
MH1/4 20X3/4 - BOLTS (18" APROX. O.C.)
5228 - ANCHOR (QTY. 2)
MPS-8X1 1/2 - FASTENERS (QTY. 2)

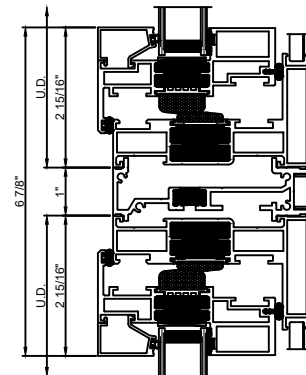
CAN ONLY BE USED WITH C600



Exterior

Window cut sections 1:4

Exterior



1" STACK MULL

M23841 - STACK MULL
M23842 - INTERIOR COVER
970-300 - WEEP COVER
QWP-M23844 - END DAM (QTY. 2)
BRBT46 - POP RIVET (QTY. 8)

C600 Install ONLY

Window cut sections 1:4

Note: All dimensions are approximate. Quaker reserves the right to change specifications without notice.